

FEATURES

ALL HEATER TEK METAL HEATERS HAVE THE SAME OUTSTANDING FEATURES:

- Excellent chemical resistance with stainless steel or titanium sheaths
- Low watt density for long life: 35 w/in² (5w/cm²) for standard watt density, 17 w/in² (2.5w/cm²) for derated watt density
- Corrosion resistant FRPP terminal enclosure
- Grounded metal element
- Voltages: 120, 208, 240, or 480
- Thermal over-temperature protection:
 - P1 replaceable fuse up to 180° F
 - P4 replaceable fuse up to 230° F
 - P5 replaceable fuse up to 300° F
 - P2 resettable fuse up to 180° F
 - P6 resettable fuse up to 230° F
 - P7 resettable fuse up to 300° F



NOTE

ALL immersion heater installations **MUST** have both liquid level control for low level heater shut off **AND** over-temperature thermal protection.

ABOUT HEATERTEK

HeaterTek is a trusted provider of high-performance industrial immersion heaters, coils, and controls designed to meet the demanding requirements of the metal finishing and industrial processing industries. With a strong focus on quality, reliability, and fast delivery, HeaterTek offers a broad range of electric heating solutions engineered for long service life and dependable performance in corrosive and high-temperature environments. Backed by experienced technical support and extensive product expertise, HeaterTek partners with customers to deliver efficient, cost-effective heating solutions that keep operations running smoothly and productively

HeaterTek

HF, HS, & HT SINGLE TUBE OVER THE SIDE METAL HEATER



| Watts | Volts | Hot Zone in (mm) | Overall Length in (mm) | 316 SS | Titanium | Ship Wt lbs (kg) |
|-------|-------|------------------|------------------------|--------------|--------------|------------------|
| 1000 | 120 | 6 (152) | 11 (279) | HS1111-*.** | HT1111-*.** | 7 (3) |
| | 240 | 6 (152) | 11 (279) | HS1211-*.** | HT1211-*.** | 7 (3) |
| 2000 | 240 | 10 (254) | 17 (432) | HS2217-*.** | HT2217-*.** | 10 (5) |
| | 480 | 10 (254) | 17 (432) | HS2417-*.** | HT2417-*.** | 10 (5) |
| 3000 | 240 | 16 (406) | 23 (584) | HS3223-*.** | HT3223-*.** | 11 (5) |
| | 480 | 16 (406) | 23 (584) | HS3423-*.** | HT3423-*.** | 11 (5) |
| 4000 | 240 | 20 (508) | 29 (737) | HS4229-*.** | HT4229-*.** | 13 (6) |
| | 480 | 20 (508) | 29 (737) | HS4429-*.** | HT4429-*.** | 13 (6) |
| 5000 | 240 | 25 (635) | 35 (889) | HS5235-*.** | HT5235-*.** | 15 (7) |
| | 480 | 25 (635) | 35 (889) | HS5435-*.** | HT5435-*.** | 15 (7) |
| 6000 | 240 | 30 (762) | 40 (1016) | HS6240-*.** | HT6240-*.** | 17 (8) |
| | 480 | 30 (762) | 40 (1016) | HS6440-*.** | HT6440-*.** | 17 (8) |
| 8000 | 240 | 37 (940) | 47 (1194) | HS8247-*.** | HT8247-*.** | 23 (10) |
| | 480 | 37 (940) | 47 (1194) | HS8447-*.** | HT8447-*.** | 23 (10) |
| 9000 | 240 | 44 (1118) | 54 (1372) | HS9254-*.** | HT9254-*.** | 24 (11) |
| | 480 | 44 (1118) | 54 (1372) | HS9454-*.** | HT9454-*.** | 24 (11) |
| 10000 | 240 | 49 (1245) | 59 (1499) | HS10259-*.** | HT10259-*.** | 25 (11) |
| | 480 | 49 (1245) | 59 (1499) | HS10459-*.** | HT10459-*.** | 25 (11) |
| 12000 | 480 | 58 (1473) | 68 (1727) | HS12468-*.** | HT12468-*.** | 28 (12.7) |

CONTACT

HeaterTek

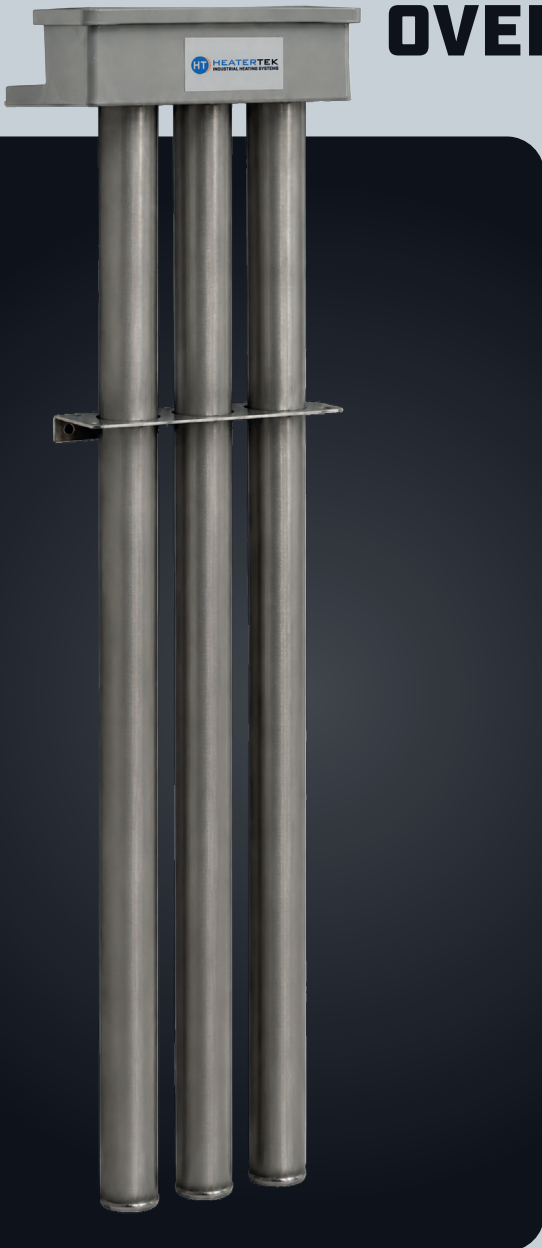
9530 W Bethel Ct. | Boise, Idaho 83709

(812) 962-5770 | sales@heatertek.com

www.heatertek.com |   



H3F, H3S, & H3T TRIPLE TUBE OVER THE SIDE METAL HEATER



| Watts | Volts | Hot Zone in (mm) | Overall Length in (mm) | 316 SS | Titanium | Ship Wt lbs (kg) |
|-------|-------|---------------------|------------------------------|---------------|---------------|---------------------|
| 3000 | 240 | 6 (152) | 11 (279) | H3S3211-*-** | H3T3211-*-** | 21 (9.5) |
| | 480 | 6 (152) | 11 (279) | H3S3411-*-** | H3T3411-*-** | 21 (9.5) |
| 6000 | 240 | 10 (254) | 17 (432) | H3S6217-*-** | H3T6217-*-** | 30 (13.6) |
| | 480 | 10 (254) | 17 (432) | H3S6417-*-** | H3T6417-*-** | 30 (13.6) |
| 9000 | 240 | 16 (406) | 23 (584) | H3S9223-*-** | H3T9223-*-** | 33 (15) |
| | 480 | 16 (406) | 23 (584) | H3S9423-*-** | H3T9423-*-** | 33 (15) |
| 12000 | 240 | 20 (508) | 29 (737) | H3S12229-*-** | H3T12229-*-** | 39 (17.7) |
| | 480 | 20 (508) | 29 (737) | H3S12429-*-** | H3T12429-*-** | 39 (17.7) |
| 15000 | 240 | 25 (635) | 35 (889) | H3S15235-*-** | H3T15235-*-** | 45 (20.4) |
| | 480 | 25 (635) | 35 (889) | H3S15435-*-** | H3T15435-*-** | 45 (20.4) |
| 18000 | 240 | 30 (762) | 40 (1016) | H3S18240-*-** | H3T18240-*-** | 51 (23.1) |
| | 480 | 30 (762) | 40 (1016) | H3S18440-*-** | H3T18440-*-** | 51 (23.1) |
| 24000 | 240 | 37 (940) | 47 (1194) | H3S24247-*-** | H3T24247-*-** | 63 (28.6) |
| | 480 | 37 (940) | 47 (1194) | H3S24447-*-** | H3T24447-*-** | 63 (28.6) |
| 27000 | 480 | 44 (1118) | 54 (1372) | H3S27454-*-** | H3T27454-*-** | 69 (31.3) |
| 30000 | 480 | 49 (1245) | 59 (1499) | H3S30459-*-** | H3T30459-*-** | 75 (34) |
| 36000 | 480 | 58 (1473) | 68 (1727) | H3S36468-*-** | H3T36468-*-** | 84 (38.1) |

CONTACT

HeaterTek

9530 W Bethel Ct. | Boise, Idaho 83709

(812) 962-5770 | sales@heatertek.com

www.heatertek.com |   



HOD



DERATED METAL OVER THE SIDE HEATER

| Watts | Volts | Hot Zone in (mm) | Overall Length in (mm) | 316 SS | Titanium | Ship Wt lbs (kg) |
|-------|-------|---------------------|------------------------------|-----------------|-----------------|---------------------|
| 500 | 120 | 6 (152) | 11 (279) | HDS.5111-*.** | HDT.5111-*.** | 7 (3.2) |
| | 240 | 6 (152) | 11 (279) | HDS.5211-*.** | HDT.5211-*.** | 7 (3.2) |
| 1000 | 240 | 10 (254) | 17 (432) | HDS1217-*.** | HDT1217-*.** | 10 (4.5) |
| | 480 | 10 (254) | 17 (432) | HDS1417-*.** | HDT1417-*.** | 10 (4.5) |
| 1500 | 240 | 16 (406) | 23 (584) | HDS1.5223-*.** | HDT1.5223-*.** | 11 (5) |
| | 480 | 16 (406) | 23 (584) | HDS1.5423-*.** | HDT1.5423-*.** | 11 (5) |
| 2000 | 240 | 20 (508) | 29 (737) | HDS2229-*.** | HDT2229-*.** | 13 (5.9) |
| | 480 | 20 (508) | 29 (737) | HDS2429-*.** | HDT2429-*.** | 13 (5.9) |
| 2500 | 240 | 25 (635) | 35 (889) | HDS2.5235-*.** | HDT2.5235-*.** | 15 (6.8) |
| | 480 | 25 (635) | 35 (889) | HDS2.5435-*.** | HDT2.5435-*.** | 15 (6.8) |
| 3000 | 240 | 30 (762) | 40 (1016) | HDS3240-*.** | HDT3240-*.** | 17 (7.7) |
| | 480 | 30 (762) | 40 (1016) | HDS3440-*.** | HDT3440-*.** | 17 (7.7) |
| 4000 | 240 | 37 (940) | 47 (1194) | HDS4247-*.** | HDT4247-*.** | 23 (10.4) |
| | 480 | 37 (940) | 47 (1194) | HDS4447-*.** | HDT4447-*.** | 23 (10.4) |
| 4500 | 240 | 44 (1118) | 54 (1372) | HDS4.55254-*.** | HDT4.55254-*.** | 24 (10.9) |
| | 480 | 44 (1118) | 54 (1372) | HDS4.55454-*.** | HDT4.55454-*.** | 24 (10.9) |
| 5000 | 240 | 49 (1245) | 59 (1499) | HDS5259-*.** | HDT5259-*.** | 25 (11.3) |
| | 480 | 49 (1245) | 59 (1499) | HDS5459-*.** | HDT5459-*.** | 25 (11.3) |
| 6000 | 240 | 58 (1473) | 68 (1727) | HDS6268-*.** | HDT6268-*.** | 28 (12.7) |
| | 480 | 58 (1473) | 68 (1727) | HDS6468-*.** | HDT6468-*.** | 28 (12.7) |

CONTACT



HD3

DERATED TRIPLE METAL OVER THE SIDE HEATER



| Watts | Volts | Hot Zone in (mm) | Overall Length in (mm) | 316 SS | Titanium | Ship Wt lbs (kg) |
|-------|-------|------------------|------------------------|-----------------------------|-----------------------------|------------------|
| 1500 | 120 | 6 (152) | 11 (279) | HD3S1.5111-* ^{**} | HD3T1.5111-* ^{**} | 21 (9.5) |
| | 240 | 6 (152) | 11 (279) | HD3S1.5211-* ^{**} | HD3T1.5211-* ^{**} | 21 (9.5) |
| 3000 | 240 | 10 (254) | 17 (432) | HD3S3217-* ^{**} | HD3T3217-* ^{**} | 30 (13.6) |
| | 480 | 10 (254) | 17 (432) | HD3S3417-* ^{**} | HD3T3417-* ^{**} | 30 (13.6) |
| 4500 | 240 | 16 (406) | 23 (584) | HD3S4.5223-* ^{**} | HD3T4.5223-* ^{**} | 33 (15) |
| | 480 | 16 (406) | 23 (584) | HD3S4.5423-* ^{**} | HD3T4.5423-* ^{**} | 33 (15) |
| 6000 | 240 | 20 (508) | 29 (737) | HD3S6229-* ^{**} | HD3T6229-* ^{**} | 39 (17.7) |
| | 480 | 20 (508) | 29 (737) | HD3S6429-* ^{**} | HD3T6429-* ^{**} | 39 (17.7) |
| 7500 | 240 | 25 (635) | 35 (889) | HD3S7.5235-* ^{**} | HD3T7.5235-* ^{**} | 45 (20.4) |
| | 480 | 25 (635) | 35 (889) | HD3S7.5435-* ^{**} | HD3T7.5435-* ^{**} | 45 (20.4) |
| 9000 | 240 | 30 (762) | 40 (1016) | HD3S9240-* ^{**} | HD3T9240-* ^{**} | 51 (23.1) |
| | 480 | 30 (762) | 40 (1016) | HD3S9440-* ^{**} | HD3T9440-* ^{**} | 51 (23.1) |
| 12000 | 240 | 37 (940) | 47 (1194) | HD3S12247-* ^{**} | HD3T12247-* ^{**} | 63 (28.6) |
| | 480 | 37 (940) | 47 (1194) | HD3S12447-* ^{**} | HD3T12447-* ^{**} | 63 (28.6) |
| 13500 | 240 | 44 (1118) | 54 (1372) | HD3S13.5254-* ^{**} | HD3T13.5254-* ^{**} | 69 (31.3) |
| | 480 | 44 (1118) | 54 (1372) | HD3S13.5454-* ^{**} | HD3T13.5454-* ^{**} | 69 (31.3) |
| 15000 | 240 | 49 (1245) | 59 (1499) | HD3S15259-* ^{**} | HD3T15259-* ^{**} | 75 (34) |
| | 480 | 49 (1245) | 59 (1499) | HD3S15459-* ^{**} | HD3T15459-* ^{**} | 75 (34) |
| 18000 | 240 | 58 (1473) | 68 (1727) | HD3S18268-* ^{**} | HD3T18268-* ^{**} | 84 (38.1) |
| | 480 | 58 (1473) | 68 (1727) | HD3S18468-* ^{**} | HD3T18468-* ^{**} | 84 (38.1) |

CONTACT

HeaterTek

9530 W Bethel Ct. | Boise, Idaho 83709

(812) 962-5770 | sales@heatertek.com

www.heatertek.com |   



H L

METAL L-SHAPED HEATER



| Watts | Volts | Horizontal in (mm) | Standard Vertical in (mm) | 316 SS | Titanium | Ship Wt lbs (kg) |
|-------|-------|--------------------|---------------------------|-----------------|-----------------|------------------|
| 1000 | 120 | 13 (330) | 15 (381) | HLS1113Q-R*-** | HLT1113Q-R*-** | 10 (4.5) |
| | 240 | 13 (330) | 15 (381) | HLS1213Q-R*-** | HLT1213Q-R*-** | 10 (4.5) |
| 2000 | 120 | 17 (432) | 19 (483) | HLS2117Q-R*-** | HLT2117Q-R*-** | 11 (5) |
| | 240 | 17 (432) | 19 (483) | HLS217Q-R*-** | HLT217Q-R*-** | 11 (5) |
| | 480 | 17 (432) | 19 (483) | HLS2417Q-R*-** | HLT2417Q-R*-** | 11 (5) |
| 3000 | 240 | 22 (559) | 25 (635) | HLS3222Q-R*-** | HLT3222Q-R*-** | 12 (5.4) |
| | 480 | 22 (559) | 25 (635) | HLS3422Q-R*-** | HLT3422Q-R*-** | 12 (5.4) |
| 4000 | 240 | 26 (660) | 25 (635) | HLS4226Q-R*-** | HLT4226Q-R*-** | 13 (5.9) |
| | 480 | 26 (660) | 25 (635) | HLS4426Q-R*-** | HLT4426Q-R*-** | 13 (5.9) |
| 5000 | 240 | 31 (787) | 37 (940) | HLS5231Q-R*-** | HLT5231Q-R*-** | 14 (6.4) |
| | 480 | 31 (787) | 37 (940) | HLS5431Q-R*-** | HLT5431Q-R*-** | 14 (6.4) |
| 6000 | 240 | 36 (914) | 50 (1270) | HLS6236Q-R*-** | HLT6236Q-R*-** | 15 (6.8) |
| | 480 | 36 (914) | 50 (1270) | HLS6436Q-R*-** | HLT6436Q-R*-** | 15 (6.8) |
| 8000 | 240 | 44 (1118) | 50 (1270) | HLS8244Q-R*-** | HLT8244Q-R*-** | 18 (8.2) |
| | 480 | 44 (1118) | 50 (1270) | HLS8444Q-R*-** | HLT8444Q-R*-** | 18 (8.2) |
| 9000 | 240 | 50 (1270) | 50 (1270) | HLS9250Q-R*-** | HLT9250Q-R*-** | 20 (9.1) |
| | 480 | 50 (1270) | 50 (1270) | HLS9450Q-R*-** | HLT9450Q-R*-** | 20 (9.1) |
| 10000 | 240 | 55 (1397) | 50 (1270) | HLS10255Q-R*-** | HLT10255Q-R*-** | 22 (10) |
| | 480 | 55 (1397) | 50 (1270) | HLS10455Q-R*-** | HLT10455Q-R*-** | 22 (10) |
| 12000 | 480 | 64 (1626) | 50 (1270) | HLS12464Q-R*-** | HLT12464Q-R*-** | 25 (11.3) |

CONTACT

HeaterTek

9530 W Bethel Ct. | Boise, Idaho 83709

☎ (812) 962-5770 | ✉ sales@heatertek.com

 www.heatertek.com |   


H3L

TRIPLE METAL L-SHAPED HEATER



| Watts | Volts | Horizontal in (mm) | Standard Vertical in (mm) | 316 SS | Titanium | Ship Wt lbs (kg) |
|-------|-------|--------------------|---------------------------|------------------|------------------|------------------|
| 3000 | 240 | 13 (330) | 15 (381) | H3LS3213Q-R*-** | H3LT3213Q-R*-** | 30 (13.6) |
| | 480 | 13 (330) | 15 (381) | H3LS3413Q-R*-** | H3LT3413Q-R*-** | 30 (13.6) |
| 6000 | 240 | 17 (432) | 37 (940) | H3LS6217Q-R*-** | H3LT6217Q-R*-** | 33 (15) |
| | 480 | 17 (432) | 37 (940) | H3LS6417Q-R*-** | H3LT6417Q-R*-** | 33 (15) |
| 9000 | 240 | 22 (559) | 37 (940) | H3LS9222Q-R*-** | H3LT9222Q-R*-** | 36 (16.3) |
| | 480 | 22 (559) | 37 (940) | H3LS9422Q-R*-** | H3LT9422Q-R*-** | 36 (16.3) |
| 12000 | 240 | 26 (660) | 37 (940) | H3LS12226Q-R*-** | H3LT12226Q-R*-** | 30 (17.7) |
| | 480 | 26 (660) | 37 (940) | H3LS12426Q-R*-** | H3LT12426Q-R*-** | 30 (17.7) |
| 15000 | 240 | 31 (787) | 37 (940) | H3LS15231Q-R*-** | H3LT15231Q-R*-** | 42 (19.1) |
| | 480 | 31 (787) | 37 (940) | H3LS15431Q-R*-** | H3LT15431Q-R*-** | 42 (19.1) |
| 18000 | 240 | 36 (914) | 50 (1270) | H3LS18236Q-R*-** | H3LT18236Q-R*-** | 45 (20.4) |
| | 480 | 36 (914) | 50 (1270) | H3LS18436Q-R*-** | H3LT18436Q-R*-** | 45 (20.4) |
| 24000 | 240 | 44 (1118) | 50 (1270) | H3LS24244Q-R*-** | H3LT24244Q-R*-** | 54 (24.5) |
| | 480 | 44 (1118) | 50 (1270) | H3LS24444Q-R*-** | H3LT24444Q-R*-** | 54 (24.5) |
| 27000 | 480 | 50 (1270) | 50 (1270) | H3LS27450Q-R*-** | H3LT27450Q-R*-** | 60 (27.2) |
| 30000 | 480 | 55 (1397) | 50 (1270) | H3LS30455Q-R*-** | H3LT30455Q-R*-** | 66 (29.9) |
| 36000 | 480 | 64 (1626) | 50 (1270) | H3LS36464Q-R*-** | H3LT36464Q-R*-** | 75 (34) |

CONTACT

HeaterTek

9530 W Bethel Ct. | Boise, Idaho 83709

(812) 962-5770 | sales@heatertek.com

www.heatertek.com |   



HD L

DERATED METAL L-SHAPED HEATER



| Watts | Volts | Horizontal in (mm) | Standard Vertical in (mm) | 316 SS | Titanium | Ship Wt lbs (kg) |
|-------|-------|-----------------------|------------------------------|-------------------|-------------------|---------------------|
| 500 | 120 | 13 (330) | 15 (381) | HDLS.5113Q-R*-** | HDLT.5113Q-R*-** | 10 (4.5) |
| | 240 | 13 (330) | 15 (381) | HDLS.5213Q-R*-** | HDLT.5213Q-R*-** | 10 (4.5) |
| 1000 | 120 | 17 (432) | 19 (483) | HDLS1117Q-R*-** | HDLT1117Q-R*-** | 11 (5.0) |
| | 240 | 17 (432) | 19 (483) | HDLS1217Q-R*-** | HDLT1217Q-R*-** | 11 (5.0) |
| 1500 | 120 | 22 (559) | 25 (635) | HDLS1.5122Q-R*-** | HDLT1.5122Q-R*-** | 12 (5.4) |
| | 240 | 22 (559) | 25 (635) | HDLS1.5222Q-R*-** | HDLT1.5222Q-R*-** | 12 (5.4) |
| 2000 | 240 | 26 (660) | 25 (635) | HDLS2226Q-R*-** | HDLT2226Q-R*-** | 13 (5.9) |
| | 480 | 26 (660) | 25 (635) | HDLS2426Q-R*-** | HDLT2426Q-R*-** | 13 (5.9) |
| 2500 | 240 | 31 (787) | 37 (940) | HDLS2.5231Q-R*-** | HDLT2.5231Q-R*-** | 14 (6.4) |
| | 480 | 31 (787) | 37 (940) | HDLS2.5431Q-R*-** | HDLT2.5431Q-R*-** | 14 (6.4) |
| 3000 | 240 | 36 (914) | 50 (1270) | HDLS3231Q-R*-** | HDLT3231Q-R*-** | 15 (6.8) |
| | 480 | 36 (914) | 50 (1270) | HDLS3431Q-R*-** | HDLT3431Q-R*-** | 15 (6.8) |
| 4000 | 240 | 44 (1118) | 50 (1270) | HDLS4244Q-R*-** | HDLT4244Q-R*-** | 18 (8.2) |
| | 480 | 44 (1118) | 50 (1270) | HDLS4444Q-R*-** | HDLT4444Q-R*-** | 18 (8.2) |
| 4500 | 240 | 50 (1270) | 50 (1270) | HDLS4.5250Q-R*-** | HDLT4.5250Q-R*-** | 20 (9.1) |
| | 480 | 50 (1270) | 50 (1270) | HDLS4.5450Q-R*-** | HDLT4.5450Q-R*-** | 20 (9.1) |
| 5000 | 240 | 55 (1397) | 50 (1270) | HDLS5255Q-R*-** | HDLT5255Q-R*-** | 22 (10) |
| | 480 | 55 (1397) | 50 (1270) | HDLS5455Q-R*-** | HDLT5455Q-R*-** | 22 (10) |
| 6000 | 240 | 64 (1626) | 50 (1270) | HDLS6264Q-R*-** | HDLT6264Q-R*-** | 25 (11.3) |
| | 480 | 64 (1626) | 50 (1270) | HDLS6464Q-R*-** | HDLT6464Q-R*-** | 25 (11.3) |

CONTACT

HeaterTek

9530 W Bethel Ct. | Boise, Idaho 83709

☎ (812) 962-5770 | ✉ sales@heatertek.com

 www.heatertek.com |   


HD3L DERATED TRIPLE METAL L-SHAPED HEATER



| Watts | Volts | Horizontal in (mm) | Standard Vertical in (mm) | 316 SS | Titanium | Ship Wt lbs (kg) |
|-------|-------|--------------------|---------------------------|---------------------|---------------------|------------------|
| 1500 | 120 | 13 (330) | 15 (381) | HD3LS1.5113Q-R*-** | HD3LT1.5113Q-R*-** | 30 (13.6) |
| | 240 | 13 (330) | 15 (381) | HD3LS1.5213Q-R*-** | HD3LT1.5213Q-R*-** | 30 (13.6) |
| 3000 | 240 | 17 (432) | 19 (483) | HD3LS3217Q-R*-** | HD3LT3217Q-R*-** | 33 (15) |
| | 480 | 17 (432) | 19 (483) | HD3LS3417Q-R*-** | HD3LT3417Q-R*-** | 33 (15) |
| 4500 | 240 | 22 (559) | 25 (635) | HD3LS4.5222Q-R*-** | HD3LT4.5222Q-R*-** | 35 (16.3) |
| | 480 | 22 (559) | 25 (635) | HD3LS4.5422Q-R*-** | HD3LT4.5422Q-R*-** | 35 (16.3) |
| 6000 | 240 | 26 (660) | 25 (635) | HD3LS6226Q-R*-** | HD3LT6226Q-R*-** | 39 (17.7) |
| | 480 | 26 (660) | 25 (635) | HD3LS6426Q-R*-** | HD3LT6426Q-R*-** | 39 (17.7) |
| 7500 | 240 | 31 (787) | 37 (940) | HD3LS7.5231Q-R*-** | HD3LT7.5231Q-R*-** | 42 (19.1) |
| | 480 | 31 (787) | 37 (940) | HD3LS7.5431Q-R*-** | HD3LT7.5431Q-R*-** | 42 (19.1) |
| 9000 | 240 | 36 (914) | 50 (1270) | HD3LS9236Q-R*-** | HD3LT9236Q-R*-** | 45 (20.4) |
| | 480 | 36 (914) | 50 (1270) | HD3LS9436Q-R*-** | HD3LT9436Q-R*-** | 45 (20.4) |
| 12000 | 240 | 44 (1118) | 50 (1270) | HD3LS12244Q-R*-** | HD3LT12244Q-R*-** | 54 (24.5) |
| | 480 | 44 (1118) | 50 (1270) | HD3LS12444Q-R*-** | HD3LT12444Q-R*-** | 54 (24.5) |
| 13500 | 240 | 50 (1270) | 50 (1270) | HD3LS13.5250Q-R*-** | HD3LT13.5250Q-R*-** | 60 (27.2) |
| | 480 | 50 (1270) | 50 (1270) | HD3LS13.5450Q-R*-** | HD3LT13.5450Q-R*-** | 60 (27.2) |
| 15000 | 240 | 55 (1397) | 50 (1270) | HD3LS15255Q-R*-** | HD3LT15255Q-R*-** | 66 (29.9) |
| | 480 | 55 (1397) | 50 (1270) | HD3LS15455Q-R*-** | HD3LT15455Q-R*-** | 66 (29.9) |
| 18000 | 240 | 64 (1626) | 50 (1270) | HD3LS18264Q-R*-** | HD3LT18264Q-R*-** | 75 (34) |
| | 480 | 64 (1626) | 50 (1270) | HD3LS18464Q-R*-** | HD3LT18464Q-R*-** | 75 (34) |

CONTACT

HeaterTek

9530 W Bethel Ct. | Boise, Idaho 83709

(812) 962-5770 | sales@heatertek.com

www.heatertek.com |   



H3V

THREE ELEMENT METAL DEEP TANK HEATER



| Watts | Volts | Three Tube Length in (mm) | 316 SS | Titanium |
|-------|-------|---------------------------|-----------------|-----------------|
| 18000 | 240 | 36 (914) | H3VS18236-**-** | H3VT18236-**-** |
| | 480 | 36 (914) | H3VS18436-**-** | H3VT18436-**-** |
| 24000 | 240 | 44 (1118) | H3VS24344-**-** | H3VT24344-**-** |
| | 480 | 44 (1118) | H3VS24444-**-** | H3VT24444-**-** |
| 27000 | 480 | 50 (1270) | H3VS27450-**-** | H3VT27450-**-** |
| 30000 | 480 | 55 (1397) | H3VS30455-**-** | H3VT30455-**-** |
| 36000 | 480 | 64 (1626) | H3VS36464-**-** | H3VT36464-**-** |
| 45000 | 480 | 77 (1956) | H3VS45477-**-** | H3VT45477-**-** |
| 48000 | 480 | 82 (2083) | H3VS48482-**-** | H3VT48482-**-** |
| 54000 | 480 | 91 (2311) | H3VS54491-**-** | H3VT54491-**-** |

CONTACT

HeaterTek

9530 W Bethel Ct. | Boise, Idaho 83709

(812) 962-5770 | sales@heatertek.com

www.heatertek.com |   



H3LV VERTICAL STACK TRIPLE METAL L-SHAPED HEATER



| Watts | Volts | Horizontal in (mm) | Standard Vertical in (mm) | 316 SS | Titanium | Ship Wt lbs (kg) |
|-------|-------|--------------------|---------------------------|-------------------|-------------------|------------------|
| 3000 | 240 | 13 (330) | 15 (381) | H3LVS3213Q-R*-** | H3LVT3213Q-R*-** | 30 (13.6) |
| | 480 | 13 (330) | 15 (381) | H3LVS3413Q-R*-** | H3LVT3413Q-R*-** | 30 (13.6) |
| 6000 | 240 | 17 (432) | 19 (483) | H3LVS6217Q-R*-** | H3LVT6217Q-R*-** | 33 (15) |
| | 480 | 17 (432) | 19 (483) | H3LVS6417Q-R*-** | H3LVT6417Q-R*-** | 33 (15) |
| 9000 | 240 | 22 (559) | 25 (635) | H3LVS9222Q-R*-** | H3LVT9222Q-R*-** | 36 (16.3) |
| | 480 | 22 (559) | 25 (635) | H3LVS9422Q-R*-** | H3LVT9422Q-R*-** | 36 (16.3) |
| 12000 | 240 | 26 (660) | 25 (635) | H3LVS12226Q-R*-** | H3LVT12226Q-R*-** | 39 (17.7) |
| | 480 | 26 (660) | 25 (635) | H3LVS12426Q-R*-** | H3LVT12426Q-R*-** | 39 (17.7) |
| 15000 | 240 | 31 (787) | 37 (940) | H3LVS15231Q-R*-** | H3LVT15231Q-R*-** | 42 (19.1) |
| | 480 | 31 (787) | 37 (940) | H3LVS15431Q-R*-** | H3LVT15431Q-R*-** | 42 (19.1) |
| 18000 | 240 | 36 (914) | 50 (1270) | H3LVS18236Q-R*-** | H3LVT18236Q-R*-** | 45 (20.4) |
| | 480 | 36 (914) | 50 (1270) | H3LVS18436Q-R*-** | H3LVT18436Q-R*-** | 45 (20.4) |
| 24000 | 240 | 44 (1118) | 50 (1270) | H3LVS24244Q-R*-** | H3LVT24244Q-R*-** | 54 (24.5) |
| | 480 | 44 (1118) | 50 (1270) | H3LVS24444Q-R*-** | H3LVT24444Q-R*-** | 54 (24.5) |
| 27000 | 480 | 50 (1270) | 50 (1270) | H3LVS27450Q-R*-** | H3LVT27450Q-R*-** | 60 (27.2) |
| 30000 | 480 | 55 (1397) | 50 (1270) | H3LVS30455Q-R*-** | H3LVT30455Q-R*-** | 66 (29.9) |
| 36000 | 480 | 64 (1626) | 50 (1270) | H3LVS36464Q-R*-** | H3LVT36464Q-R*-** | 75 (34) |

CONTACT

HeaterTek

9530 W Bethel Ct. | Boise, Idaho 83709

(812) 962-5770 | sales@heatertek.com

www.heatertek.com |   



H3HS THREE ELEMENT 316 STAINLESS STEEL HEATER



| Watts | Volts | Hot Zone in (mm) | Length in (mm) | Model Number | Ship Wt lbs (kg) |
|-------|-------|------------------|----------------|----------------|------------------|
| 3000 | 240 | 11 (279) | 17 (432) | H3HS3217-** | 9 (4.1) |
| | 480 | 11 (279) | 17 (432) | H3HS3417-** | 9 (4.1) |
| 4500 | 240 | 16 (406) | 23 (584) | H3HS4.5223-** | 10 (4.5) |
| | 480 | 16 (406) | 23 (584) | H3HS4.5423-** | 10 (4.5) |
| 7500 | 240 | 21 (533) | 29 (737) | H3HS7.5229-** | 12 (5.4) |
| | 480 | 21 (533) | 29 (737) | H3HS7.5429-** | 12 (5.4) |
| 10500 | 240 | 26 (660) | 34 (864) | H3HS10.5234-** | 14 (6.4) |
| | 480 | 26 (660) | 34 (864) | H3HS10.5434-** | 14 (6.4) |

CONTACT

HeaterTek

9530 W Bethel Ct. | Boise, Idaho 83709

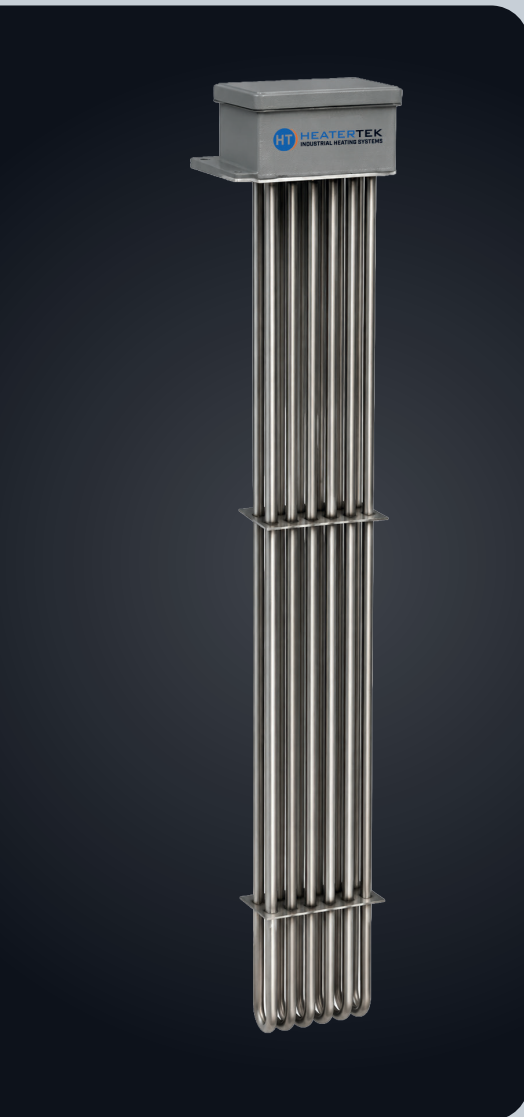
(812) 962-5770 | sales@heatertek.com

www.heatertek.com |   



H6HS

SIX ELEMENT 316 STAINLESS STEEL HEATER

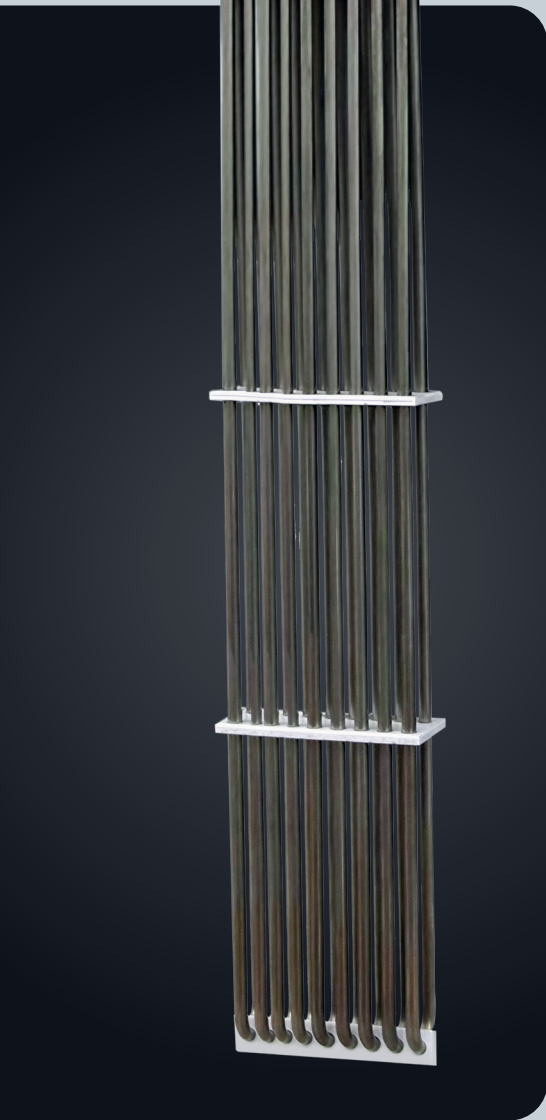


| Watts | Volts | Hot Zone in (mm) | Length in (mm) | Model Number | Ship Wt lbs (kg) |
|-------|-------|---------------------|-------------------|--------------|---------------------|
| 6000 | 240 | 10 (254) | 17 (432) | H6HS6217-** | 12 (5.4) |
| | 480 | 10 (254) | 17 (432) | H6HS6417-** | 12 (5.4) |
| 9000 | 240 | 16 (406) | 23 (584) | H6HS9223-** | 13 (5.9) |
| | 480 | 16 (406) | 23 (584) | H6HS9423-** | 13 (5.9) |
| 15000 | 240 | 20 (508) | 29 (737) | H6HS15229-** | 16 (7.3) |
| | 480 | 20 (508) | 29 (737) | H6HS15429-** | 16 (7.3) |
| 21000 | 240 | 25 (635) | 34 (864) | H6HS21234-** | 18 (8.2) |
| | 480 | 25 (635) | 34 (864) | H6HS21434-** | 18 (8.2) |

CONTACT



H9HS NINE ELEMENT 316 STAINLESS STEEL HEATER



| Watts | Volts | Hot Zone in (mm) | Length in (mm) | Model Number | Ship Wt lbs (kg) |
|-------|-------|---------------------|-------------------|-----------------|---------------------|
| 9000 | 240 | 10 (254) | 17 (432) | H9HS9217-** | 16 (7.3) |
| | 480 | 10 (254) | 17 (432) | H9HS9417-** | 16 (7.3) |
| 13500 | 240 | 16 (406) | 23 (584) | H9HS13.5223-** | 19 (8.6) |
| | 480 | 16 (406) | 23 (584) | H9HS13.5423-** | 19 (8.6) |
| 22500 | 240 | 20 (508) | 29 (737) | H9HS22.5229-** | 23 (10.4) |
| | 480 | 20 (508) | 29 (737) | H9HS22.5429-** | 23 (10.4) |
| 31500 | 240 | 25 (635) | 34 (864) | H9HS31.5234M-** | 25 (11.3) |
| | 480 | 25 (635) | 34 (864) | H9HS31.5434-** | 25 (11.3) |

CONTACT

HeaterTek

9530 W Bethel Ct. | Boise, Idaho 83709

(812) 962-5770 | sales@heatertek.com

www.heatertek.com |   

